

Abstract
of the 17th Annual
Meeting of the
Bi-Digital O-Ring
TEST

April 14- April 15
at Sanjyo Conference Hall
in Tokyo University, Japan

The Effects of Acupuncture Using "Press Needles" on Youth Soccer Players

Mitsunori Tsumaki

Advisor, Tokyo College of Sports & Recreation

(Correspondence: e-mail: m-tsumaki@r3.dion.ne.jp)

(Research Aim)

In recent years, acupuncture is used by many sports players including professional athletes. Nearly half of the trainers accompanying the team to the Olympic Games have obtained qualifications in acupuncture.

This proves that it is acknowledged in the sports field that acupuncture is effective to

- ① promote the healing of injuries
- ② promote recovery from fatigue and pain
- ③ improvement of sports abilities

Under such circumstances there are more reports on the mechanisms of effects and the assessments of effects in acupuncture. Among the articles written in the past many of them have taken a physiological approach to understanding the mechanisms of the effects. Concerning the assessments of effects most of them have only examined pain and ease of movements subjectively.

Recently there are some verifications using photographic diagnosis. But in reality there are few articles which assess objectively the ease of movements. The ease of movements which were used for the assessment of the effects of acupuncture were objectively completed. Therefore, at this time the effects in promotion of rehabilitation and improving performance will be examined from the results of the assessments.

TRADITIONAL MEDICINE OF JAPAN IN FUTURE: CANCER PREVENTION

TAKASHI SAITO M.D, Ph .D, Cert. ORT-MD (1 Dan)¹, Ryutaro Saito, M.D. , Ryoji Saito.

1 Western and Oriental Traditional Nature Medicine Clinic Group, Tokyo, Japan
<http://www.706.jp>

2 School of Traditional Medicine, Health Sciences, University of Mongolia, Mongolia

In Japanese traditional medicine *Ki* (cosmic energy), Ketsu (blood), Sui (body liquid) run smoothly whole healthy body. If disturbance occurs, it is sick.. Disorder of blood flow and lymphatic flow are visible. But the flow of *Ki* is invisible. So, it is very difficult to find the disturbance of it. But only Hadow method can catch it.

There are three tides in Hadow method of Japanese traditional medicine:

- 1) BDORT (Bi-Digital O-ring test) (Japan, Y. Omura, 1977-2007).
- 2) KIKOU (Cosmic energy) (Japan, T. Yayama, 1986).
- 3) Bio resonance (German, P. Schmit).

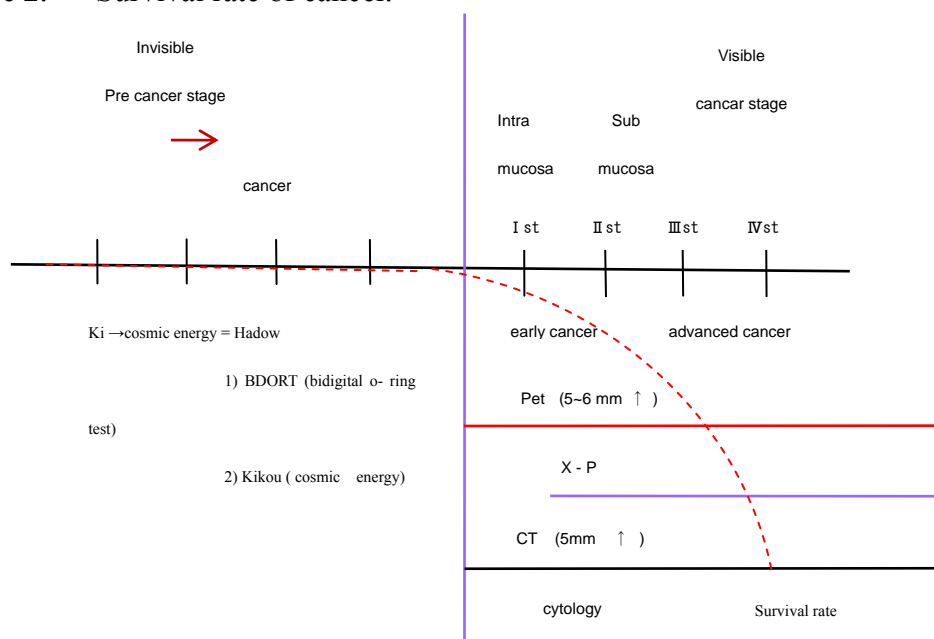
Main theme of today is BDORT (Bi-Digital O-ring test)

The examination of cancer is visible. So, it is easy to diagnose. But minimum limit of identified tumor size is 5~6 mm. Fewer than 5~6 mm the tumor doesn't identified.

With BDORT test, we can measure very small molecular substance from nano(10^{-9}) to pico(10^{-12}). Benefits of this test only depend on diagnostic technique skills, no need to purchase expensive medical equipment. With this method, we can examine not only cancer tumor but also very small molecular substance of which the current technology couldn't identify.

HADOW METHOD IS REMARKABLE IN FUTURE.

Picture 2. Survival rate of cancer.



PMS Syndrome Caused by the Quantitative Imbalance of Estrogen and Progesterone

Chieko Hirobe Ph.D., Cert. ORT-Pharm (2 Dan)

Prof. Cultural History, Seisen University, Kanagawa, Japan

(Correspondence: e-mail: hirobe@seisen-u.ac.jp)

The amounts of Estrogen and Progesterone are closely connected with women's menstrual cycles. The author observed PMS syndrome, paying special attention to hyper-secretion of Estrogen and low-secretion of Progesterone. The author made slide samples of different concentrations of β -Estradiol and Progesterone and determined β -Estradiol and Progesterone values in women's bodies. The author did so by measuring by the BDORT method the amounts of these two substances present in their ovaries around the 21th day of their menstruation cycle.

(The Results) Those who have no pain and no trouble during menstruation belong to A group and those who show some trouble belong to B group. A group showed β -Estradiol value of 7-8mg and Progesterone (around 7mg), whereas B group showed β -Estradiol value of either 6mg or lower or as high as 13mg with Progesterone (0.7mg).

By using Vintage Noni Juice (20-30ml) or the Golden Blend (extraction from Vitex agnus-castus, Syribum marianum and Dioscora villosa), those belonging to B group showed nearly the same amounts of the above-mentioned A group.

Some women show disorder including PMS by excessive amount of estrogens. It is very difficult to cure the PMS syndrome by any of the current methods (which use synthetic estrogens and Progesterone). When Vintage Noni, or the Golden Blend is used, the amount of Progesterone increases and as for that of β -Estradiol it increases, if it is low and decreases, if it is too high.

Citrus fruits, fermented foods such as Japanese Natto (fermented beans), cheese, yogurt have tendencies of decreasing an amount of Progesterone. For instance, if anyone with an amount of Progesterone 0.8mg drinks 20ml of Noni, her ovaries' amount of Progesterone increases to 6.4mg, but again drops to 0.1mg by eating one pack of Natto and to 0.2mg by eating a liced half of Buntan (Zabon). If a person (an amount of Adiponectin of 100ng) drinks 20ml of Noni, he or she can increase the amount to 400ng, but also decrease to 100pg by eating Natto or to 10ng by Buntan. If a person with an amount of dopamine of 10^{-13} g drinks 20ml of Noni, he or she can increase the amount to 90ng, but decreases it to 10^{-19} by eating Natto and to 10pg by eating a sliced half cut of Buntan. If a person (an amount of acetylcholine of 10pg) drinks 20ml of Noni, the amount of acetylcholine increases to 2400 μ g, but again decreases to 100ng by eating Natto and to 450ng by eating a sliced half of Buntan. In the following list are some foods for your information.

	Progesterone(mg)	Adiponectin (pg)	Dopamine(pg)	Acetylcholine(pg)
Before eating the food below	7mg	400ng	250ng	4000 μ g
yogurt	0.2	1	0.001	1
cheese	0.3	1	0.01	10
Natto(fermented soybeans	0.01	10	0.1	1
A half cut of tempe	0.2	10	100	10000
30g of sweet drink made from fermented rice	0.4	10	100	10
20g of sake lees	0.5	1	1	1
A half cut of Buntan or grapefruit	0.2	0.01	0.01	0.01
A half cut of lemon	0.2	0.001	1	1
Mandarin orange	0.1	0.01	0.01	10
grapefruit	0.3	0.01	0.01	10
50ml of small citrus fruits called Shiikuwaasa	0.5	0.01	0.01	1
3 kumquats	0.2	0.01	0.001	0.1
50g of yam	0.7	0.01	0.01	100
20g of cholesterol free mayonnaise	0.8	10^{-6}	10^{-11}	10^{-5}
20g of mayonnaise	4	20000	10	0.1
5g of margarine	0.8	100	1	0.01
lemongrass	0.3	20	10^{-13}	10^{-4}
Lemon verbena	0.2	10	10^{-17}	10^{-10}
Lemon balm	0.2	40	10^{-16}	10^{-9}
Lemon peel	0.2	100	10^{-19}	10^{-11}
Lemon myrtle	0.2	20	10^{-17}	10^{-13}

The Difference Between (+) Cloth And (-) Cloth By Using Bi-Digital O-Ring Test And Various Trial Of Changing (-) Cloth To (+)Cloth

Karo Maeda MD., Ph.D., Cert ORT-MD (3Dan)

Former Prof., Medical School, Tokyo Women's Medical University;
Director, Advance Clinic Yokohama, Yokohama City, Kanagawa, Japan
(Correspondence: TEL : +81-45-328-4166 , FAX:+81-45-328-4133,
e-mail: karomaeda@pop21.odn.ne.jp)

ABSTRACT

Dr. Omura sometimes demonstrated that there were (+) cloths and (-) cloths by Bi-Digital O-Ring Test (OMURA,Y.1977-2007;following BDORT).
I have tried to know the difference between (+) cloths and (-) clothes, and made various trials of changing (-) cloths to (+) cloths.

Materials: Synthetic fiber, Cotton, Polyester, Silk, Rayon-acetate, Wool, Mix-type (29kinds).

Colors: blue, dark blue, black, white, red, gray, yellow, figures.

RCS: ThromboxaneB2,Telomere, Chlamydia trachomatis, Borrelia burgdorferi.

Test Materials for Changing (-) to (+).

Alcohol gas, Horse-radish gas, Propolis gas, Saturated saline solution, Heat-iron, Microwave (oven).

I have checked 29 kinds of cloths and found 13 out of 29 were (+3) and 16 out of 29 under (-6) by BDORT.

All of 13 cloths showed (+) indicated under 1ng of such RCS but other 16 cloths over 1 μ g.

CONCLUSION

After 5~10 minutes exposure to the Microwave(oven), all of (-6) cloths changed into (+3) cloths which is lasting for 2 months to the end of this February, but no changed of such RCS. Otherwise were no remarkable changed. There were no specificities of cloth-materials and colors.

How to Prepare Solar Energy Stored Papers (originally discovered by Dr. Omura) and Their Clinical Effects

Kazuki Deguchi M.D., Cert. ORT-MD (3 Dan)
Director of Seki Public Health Center in Gifu prefecture
Japanese Board Certified Neurosurgeon
(Correspondence: e-mail: iqqi@mac.com)

【Purpose】 Solar energy stored papers and their clinical effects were first reported in 2004.¹⁾ In this investigation, there is a time when the sun exerts extremely positive signs, as measured by the Bi-Digital O-Ring Test (OMURA, Y. 1977-2007; BDORT). When a paper is exposed to the sun at this time, it acquires powerful clinical effects; more than the Qi-gong energy stored papers that have been used conventionally in BDORT.²⁾ Furthermore, in 2006, its reduction on the effects of asbestos, which is the cause of many malignant diseases, such as brain tumors and mesothelioma, was reported.³⁾ However, as these investigations did not provide detailed descriptions on how to prepare solar energy stored papers, we attempted to make solar energy stored papers and reviewed their clinical effects.

【Materials and Method】 The days on which the setting sun could be observed clearly were selected between April and June 2005. The roof of a six-story building, where the sun could be clearly observed setting in the mountain, was selected in Gifu city (35°25'N 136°46'E) in Japan. The levels of radioactivity and electromagnetic fields were confirmed to be low using a Geiger counter and Gauss meter, respectively, and these parameters were measured successively thereafter. For the paper, Life information cards (75mmx125mm) manufactured by Life limited were used. For about 30 minutes until the sun completely set, the sun was measured by BDORT (figure 1). When the measurement was begun, the sun usually registered as "-1", but it suddenly became more than "+3" (strongly positive) about 20 minutes later. The strongly positive state lasted for about 4 minutes, and diminished to "-1" again, thereafter. Another person held 100 pieces of paper wrapped with aluminum foil and the face side (the printed side of a ruled line) was exposed to the sun only at the time when the sun registered as strongly positive (figure 2).



figure 1



figure 2

The paper was again covered with the aluminum foil immediately before the sun shifted to the negative response. The papers were kept in an area without any electromagnetic or radioactive influences. The author covered the affected part of each patient with the face side of the paper for about 1 minute without holding them directly.

【Results】 For itching and pain, more than 70% of the patients experienced instant symptomatic improvement. However, there was little effect for pain as a result of mechanical actions, such as a blow. The effects of solar energy stored papers have been sustained more than 1 year and six months.

【Discussion】 There have been many reports of the direct influence of the sun on the human body, but there have been no other reports about solar energy and its clinical applications. One problem in the preparation of solar energy stored papers is that they require optimal weather conditions; there were few days with optimal weather at Gifu city in 2005. There were only one or two days per month when the setting sun appeared beautiful. Therefore we had very few opportunities to prepare them. Since it would appear that the season and location could influence the positive level of the sun by BDORT, further investigations throughout the year and in many locations will be necessary. As radioactive influence is considerably different by areas where structures of the stratum are not uniform, as in Gifu, prior investigation will be necessary before preparing solar energy stored papers.⁴⁾

References:

- 1) Yoshiaki Omura: Special Sunrise & Sunset Solar Energy Stored Papers and Their Clinical Applications for Intractable Pain, Circulatory Disturbance & Cancer: Comparison of Beneficial Effects Between Special Solar Energy Stored Paper and Qigong Energy Stored Paper. *Acupuncture & Electro-Therapeutic Res. Int. J* Vol.29, 1-42, 2004
- 2) Yoshiaki Omura et al: Common factors contributing to intractable pain and medical problems with insufficient drug uptake in areas to be treated, and their pathogenesis and treatment: part 1. Combined use of medication with acupuncture, (+) Qi Gong energy-stored material, soft laser or electrical stimulation, *Acupuncture & Electro-Therapeutic Res. Int. J* Vol.17, 107-148, 1992
- 3) Yoshiaki Omura: Asbestos As a Possible Major Cause of Malignant Lung Tumors (Including Small Cell Carcinoma, Adenocarcinoma & Mesothelioma), Brain Tumors (i.e. Astrocytoma & Glioblastoma Multiforme), Many Other Malignant Tumors, Intractable Pain Including Fibromyalgia, & Some Cardio-Vascular Pathology: Safe & Effective Methods of Reducing Asbestos From Normal & Pathological Areas. *Acupuncture & Electro-Therapeutic Res. Int. J.*, Vol. 31, pp. 61-125, 2006
- 4) Itsuo Shimohata: The measurement of ground radiation in Gifu prefecture, A Research Report of Gifu Prefectural Museum, Gifu Prefectural Museum, Vol.16, p.43-48, 1995 (in Japanese)

Environmental Pollution Studied by the Bi-Digital O-Ring Test and Diagnosing Physical Disorders and Treatment

Muneyoshi Oka, M.D., Ph.D., F.I.C.A.E, Cert. ORT-MD (3 Dan)

Oita Oka Hospital Chief Executive Officer, Oita, Japan

(Correspondence: TEL: +81-97-522-3131, FAX : +81-97-522-3777

e-mail : bunsikyoumei@oka-hp.com)

Environmental pollution continues to increase and on a global scale, has gotten much worse. In Japan, “sick house syndrome” and physical disorders due to pollutants are frequently observed in a wide range of age groups. When seeking the causes of these pollution related physical disorders, the author discovered that rainwater, containing many different kinds of pollutants, was a major cause of these physical disorders. Clouds and rainwater, containing toxic substances are blown into Japan by westerly winds, which suggests that environmental pollution in China has a significant influence on the physical disorders in question.

The author visited China in June, 2006 and collected water in Shanghai, Szhu, and around Lake Tai-fu. While investigating the water, using the Bi-Digital O-ring test (1977-2007, Omura, Y., New York; here after referred as BDORT), the author confirmed the water to be heavily polluted.

Therefore a connection could be drawn between the polluted water in China and the rainwater pollution in Japan. A close relation between the heavily polluted Chinese environment and the pollutants in the rainwater carried on the westerly winds

to Japan could be studied. Since the initial findings, the author have been reporting the possibility of the strong influence of Chinese environmental pollution outside of China.

Today the author would like to summarize my past reports and talk about the conditions of environmental pollution, symptoms of human physical disorders and their treatment. Especially, the author will focus this report on treatment.

If time permits, the author will also mention the quantum basic principles of BDORT and some issues concerning the method.

REDUCED GLUCOSE UPTAKE WITH MARKEDLY INCREASED GASTRIN RELEASING PEPTIDE, OSTEOPONTINE & ASBESTOS FOUND IN DARK BLACK AREAS OF PET SCAN OF CHEST WALL IN PATIENT WITH MESOTHELIOMA

Yoshiaki Omura, MD, ScD, FACA, FICAE, DAAPM, DABFM, FAAIM, FRSM

Director of Medical Research, Heart Disease Research Foundation; Adjunct Prof. Dept. of Community & Preventive Medicine, New York Medical College; President, Int'l College of Acupuncture & Electro-Therapeutics; Prof., Dept. of Non-Orthodox Medicine, Ukrainian National Kiev Medical University

Yasuhiro Shimotsuura, MD, FICAE

Vice President, ORT Life Science Research Institute, Kurume City, Japan; Vice President, Japan Bi-Digital O-Ring Test Medical Society

Harsha Duvvi, MD, MPH, FICAE

Assistant Prof., Dept. of Community & Preventive Medicine, and Dept. of Neurology,
New York Medical College

Naoki Ohata, DDS, PhD

Executive Member, Dental Division of Japan Bi-Digital O-Ring Test Medical Society

Motomu Ohki, MS, FICAE

Senior Research Scientist, ORT Life Science Research Institute, Kurume City, Japan
(Correspondence: Yoshiaki Omura, MD, ScD, 800 Riverside Dr. (8-I) New York, NY 10032
(Tel: (212) 781-6262 Fax: (212) 923-2279)

ABSTRACT

PET Scans are most often used for detecting cancer and other malignant tumors because for most of them, glucose uptake is higher than in normal tissues. However, in mesothelioma, our study showed excessive deposits of Asbestos of 0.5mg BDORT units, and markedly reduced Glucose uptake of less than 1/30 of normal tissue. As a consequence, the authors found that, in the location where there is a mesothelioma, distinctive dark black areas much darker than any normal tissue appear in the PET Scan. Therefore, a PET Scan taken parallel to the front & back of the chest wall often shows pitch-black areas on the chest wall of the patient, located on the ribs in the case of large black areas and between the ribs in the case of small black areas. If the amount of Asbestos in these areas is found to be very high in the same location where the glucose uptake is very low, one can suspect the presence of mesothelioma, which is often found at the inner wall of the chest cavity or the peritoneum in the abdomen with significantly increased Osteopontine (about 350-400 times that of normal tissue) and very significant increase in Gastrin Releasing Peptides (more than 1200 times that of normal tissue). In some patients, the only abnormal blood chemistry detected was abnormally increased Pro-Gastrin Releasing Peptide. This dark black area on the PET Scan image taken parallel to front and back of chest wall (with marked increase in asbestos, Gastrin-Releasing Peptide (GRP), & Osteopontine and marked decrease in glucose uptake in the pathological tissue) can be considered a characteristic finding for the diagnosis of mesothelioma. GRP is often increased more significantly in Mesothelioma than Osteopontine.

How to Increase Abnormally Reduced Normal Cell Telomere and Reduce Very High Cancer Cell Telomere to Less Than 1 yg by Stimulation of Accurate Organ Representation Areas of Adrenal Cortex at Upper Eyelid

Yoshiaki Omura, MD, ScD, FACA, FICAE, DAAPM, DABFM, FAAIM, FRSM

Director of Medical Research, Heart Disease Research Foundation; Adjunct Prof. Dept. of Community & Preventive Medicine, New York Medical College; President, Int'l College of Acupuncture & Electro-Therapeutics; Prof., Dept. of Non-Orthodox Medicine, Ukrainian National Kiev Medical University

(Correspondence: Yoshiaki Omura, MD, ScD, 800 Riverside Dr. (8-I) New York, NY 10032
(Tel: (212) 781-6262 Fax: (212) 923-2279)

ABSTRACT

The author has been researched the organ representation areas of the eyebrows and upper eyelids. In 2005, the author reported that each side of the eye brow represents every organs of the body. Recently the author has found the accurate organ representation areas of adrenal cortex at upper eyelid. At the upper eyelids as major organ representations areas, there are adrenal glands representation area and spleen representation area among other organ representation areas. At upper eyelid, from just above the center of pupil of each the eye to the nose about 1 - 1.5cm wide area, there exists adrenal cortex organ representation area. Then there are organ representation areas of thyroid gland, Thymus gland & Parotid gland between the base of nose and the organ representation areas of Adrenal gland. When the author examined Adrenal gland representation areas of the right side and left side of face of more than 100 individuals by Bi-Digital O-Ring Test and found that frequently left side showed abnormality when normal cell telomere measured at arms are very low, while right side of adrenal gland representation area is often normal. If the result of Bi-Digital O-Ring Test is -2, -3 and more, it is a sign of very significant abnormality in the body often with markedly reduced normal cell telomere of 1 yg or less. If the result of the left side of the adrenal cortex organ representation area is -2, -3 or more negative, normal cell telomere is very low, with high probability of presence of malignant tumor(s), with increased Integrin $\alpha 5\beta 1$. In the patients with cancer, if normal cell telomere is very low such as 1 yg ($=10^{-24}$ g) or less, Telomere and Integrin of the cancer is increased and cancer growth will be enhanced. To increase abnormally reduced normal cell Telomere and reduce very high cancer cell telomere to less than 1 yg, the author found in 2004 one optimal dose of DHEA temporally inhibited cancer cell activity with increased normal cell telomere from 1 yg to 505 – 530 ng, and in majority of people as long as wearing BDORT positive clothes and do not expose their body to very low temperature and do not take drug that inhibit DHEA effects, the beneficial effects last more than several months. While evaluating the effects of various safe methods of stimulating of abnormal adrenal cortex representation area on left upper eyelid, the author found that after stimulation of the adrenal gland representation area by simple pinching or squeezing 10-20 times by fingers, normal cell telomere increases from as low as 1yg to 505-540ng and cancer cell telomere and Integrin $\alpha 5\beta 1$ reduced to less than 1yg. By normalizing the function of adrenal cortex by these simple method, we have effectively and safely increased the normal cell telomere and decreased the cancer cell telomere to less than 1yg and able to prevent cell division of cancer cells. It is important to examine daily or at least weekly evaluation of normal cell telomere to maintain its' value above 500 ng.

Correlation between the Celiac Plexus and High Integrin $\alpha 5\beta 1$ Levels in the Epigastric Region

Midori Furukawa M.D., Ph.D., Cert. ORT-MD(1Dan)¹, Chieko Hirobe Ph.D., Cert. ORT-Pharm (2Dan)², Yasuhiro Shimotsuura M.D., F.I.C.A.E., Cert. ORT-MD (6 Dan)³

¹ Institute of Geriatrics, Tokyo Women's Medical University, ² Seisen University,

³ Shimotsuura Clinic

(Correspondence: e-mail: mfulu@iog.twmu.ac.jp)

In the Bi-Digital O-Ring Test¹⁾ (BDORT, Omura Y, 1977-2007), Integrin $\alpha 5\beta 1$ XY axis scanning is performed for cancer and precancer screenings, but Integrin $\alpha 5\beta 1$ reactions cannot be detected at levels of 100 ng in some cases. This sometimes indicates latent metastasis, but in a fair number of cases, the level of Integrin $\alpha 5\beta 1$ is high only at the epigastric region and low in other regions. The present study examines and discusses the significance of this latter case.

【Case】

After XY axis scanning for Integrin $\alpha 5\beta 1$ at 100 ng, lesions were identified using a metal rod, and the same procedure was repeated for 300 ng and 500 ng. High-concentration areas (300 ng and 500 ng) were seen in the epigastric region. Using the metal rod, high-concentration areas in the epigastric region were re-examined at 100 ng and 200 ng to examine if any reaction was undetected, but reactions were seen only for ≥ 300 ng, not 100 ng or 200 ng. A clear decrease in arm telomere was identified. In addition, as necessary, abdominal echography, gastric fluoroscopy, esophagogastroscope, colonoscopy, contrast-enhanced abdominal computed tomography (CT) and magnetic resonance imaging (MRI; including magnetic resonance cholangiopancreatography, MRCP) and tumor marker (including CEA and CA19-9) tests were performed. The results of these tests were normal.

【Discussion and verification of high concentrations of Integrin $\alpha 5\beta 1$ in the epigastric region】

1. Reactions to cancer and precancer of the epigastric organ (particularly in pancreas)

Pancreatic malignancies, including pancreatic cancer, are highly malignant, and even in the precancerous stages, expression of Integrin $\alpha 5\beta 1$ may begin around 300 ng. However, pancreatic cancer is not prevalent, and viewing all high Integrin $\alpha 5\beta 1$ levels as indicative of cancerous and precancerous lesions in pancreas appears unreasonable. Other regions with low integrin $\alpha 5\beta 1$ levels responded to the microscopic slides of various cancer tissues using the resonance phenomenon of BDORT, but the epigastric region with high Integrin $\alpha 5\beta 1$ did not respond to the cancer slides in some cases.

2. Electromagnetic waves

Some patients did not report any history of computer use at all.

3. Relationship to the junction of Qi Gong energy²⁾

The location of the junction did not correlate with Integrin $\alpha 5\beta 1$ levels in the epigastric region, and even when the junction was moved, locations and concentrations of Integrin $\alpha 5\beta 1$ in the epigastric region were unchanged.

4. Relationship to the celiac plexus

As levels of Integrin $\alpha 5\beta 1$ were high in the epigastric region, correlation of Integrin $\alpha 5\beta 1$ and the celiac plexus was investigated. BDORT showed a significant weakening response between the epigastric region of high Integrin $\alpha 5\beta 1$ and the celiac plexus in the photographic anatomy of the human body³⁾ as a reference control substance. Integrin $\alpha 5\beta 1$ levels in the epigastric region may match those in the celiac plexus⁴⁾ because Integrin $\alpha 5\beta 1$ levels in the celiac plexus should to some degree reflect levels in the stomach, pancreas, liver, and so on. In patients with lung cancer that did not involve the celiac plexus, Integrin $\alpha 5\beta 1$ reactions were not seen in the celiac plexus. Furthermore, when Integrin $\alpha 5\beta 1$ reactions were seen in several places, the epigastric region showed the superior direction in many cases, and pharmacotherapy in this region might be effective in such cases.



(Celiac Plexus 3)

【Reference】

- 1) Omura Y. Acupunct. Electro-ther. Res. 1981;6:239-254.
- 2) Ohtomo M. 7th Biennial International Symposium on the Bi-Digital O-Ring Test 2006;52.
- 3) Yokochi C., Rohen JW., Weinreb EL. Photographic anatomy of the human body Igakushoin, Tokyo: Igakushoin.1991;106-107.
- 4) Lutjen-Drecoll E., Rohen JW. Fotoatlas Anatomie(Atlas of anatomy, structure and function of the human body) Niigata: Nishimura.2002;p.146-147.

The Presentations of Lung Cancer-CT. Detected By Bi-Digital O-Ring Test But Denied “Cancer” By Modern Medicine

Karo Maeda, M.D., Ph.D., Cert. ORT-MD (3-Dan)

Former Prof., Medical School, Tokyo Women's Medical University;
Director, Advance Clinic Yokohama, Yokohama City, Kanagawa, Japan
(Correspondence: TEL : +81-45-328-4166 , FAX:+81-45-328-4133,
e-mail: karomaeda@pop21.odn.ne.jp)

ABSTRACT

We have treated 382 cases of Lung-Cancer patients during 6 years so far.

38 patients (10%) out of 382 were found to be extremely early stage of lung cancer by Bi-Digital O-Ring Test (OMURA,Y.1977-2007;following BDORT) which were denied “cancer” by Modern Medicine.

In those patients, 25 were original lung cancer, and 13 were metastatic lung cancer and 1 had Asbest Mesothlioma.

Items of those 13cases of metastatic lung cancer are as follows:

Ca.of Urinary bladder : 1, Thyroid cancer : 2, Lingual cancer :1, Kidney cancer : 2, Colorectal cancer : 3, Breast cancer : 1, Stomach cancer : 1, Esophageal cancer : 1.Layngeal cancer : 1.

In those cases, some of the Lung –CT. would be presented before and after treatments.

Role of One Optimal Dose of DHEA for Extremely Low Normal Cell Telomere & Malignant Tumor as well as the Clinical Importance of Giving Optimal Dose of Any Beneficial Drugs

Yoshiaki Omura, MD, ScD, FACA, FICAE, DAAPM, DABFM, FAAIM, FRSM

Director of Medical Research, Heart Disease Research Foundation; Adjunct Prof. Dept. of Community & Preventive Medicine, New York Medical College; President, Int'l College of Acupuncture & Electro-Therapeutics; Prof., Dept. of Non-Orthodox Medicine, Ukrainian National Kiev Medical University

(Correspondence: Yoshiaki Omura, MD, ScD, 800 Riverside Dr. (8-I) New York, NY 10032
(Tel: (212) 781-6262 Fax: (212) 923-2279)

ABSTRACT

Oral intake of optimal dose of DHEA (Dehydro-Epiandrosteron) can also significantly reduce abnormally high cancer cell telomere to 1 yg ($=10^{-24}$ g) or less but in Mesothelioma it reduces to the amount close to normal cell telomere of the same internal organ while normal cell telomere moderately increases. In average adult, optimal dose of DHEA is dependant on age, body weight, and other factors. For young adults, even 10 mg, for each dose may be toxic for some of them, but for most of adults between the ages of 20-80 optimal dose is anywhere between 4-12.5 mg. However most of the commercially available DHEA tablet is 25mg, and some of them are 10 mg. Most of doctors give to their patients average 25mg daily for the purpose of rejuvenating as miracle drug. If one continues to take 25mg, which is a toxic dose to most of the people for one dose, instead of the well known beneficial effect of rejuvenating with losing excessive fat and increased muscle mass and increased muscle strength and wrinkled dry skin becomes elastic and soft, and reducing cancer parameter towards normal, it may produce completely opposite effect and may also contribute to genesis of cancer and aging. By further evaluating these published works, the author noticed that those who claim anti-aging and rejuvenating effects use close to optimal dose or within the safe range of the dose, and those who claim undesirable effects use an over-dosage of DHEA. Our own study indicated that the optimal dose determined by Bi-Digital O-Ring Test which maximizes the increase of amount of normal cell telomere is completely dependent on the individual and varies between 3-12.5 mg. While most of the commonly sold tablet is 25 mg (occasionally 10 mg capsule) and therefore if you take 25 mg while the optimal dose is 8 mg, you have an already excessive toxic dose. Some people think that if you take two tablets (50 mg), the benefits will be even greater. Many of these people develop deteriorating symptoms that are the complete opposite of the supposed beneficial effect. The normal cell telomere of those who take 25-50 mg everyday are often reduced to an abnormally low level of less than 1 yg ($=10^{-24}$ g). When the optimal dose is used, most of the telomere will increase even among those with extremely low levels such as 1 yg, to around over 500 ng . Most of the cancer

cell telomere between 800-1500 ng, and these abnormally increased cancer cell telomere become practically zero (less than 1 yg). Changes in other cancer-related parameters are as follows: Integrin $\alpha_5\beta_1$, which is usually more than 300 ng – 450 ng in cancer tissue, is reduced to less than 1 yg; similarly, Oncogen C-fos Ab2, which is usually found at the same value as Integrin $\alpha_5\beta_1$, is also reduced to one yg or less. Hg in the cancer tissue is 200 - 400 mg BDORT units, but it will become less than one yg. Folic acid in the cancer tissue is extremely low, usually less than one zg (10^{-19} g), increases to normal tissue levels of 40-50 ng. Acetylcholine is almost always reduced to less than one fg or one ag, and will increase to 40-50 μ g by optimal dose of DHEA. Acetylcholine of normal tissues is over 350-1500 μ g. In cancer tissues, acetylcholine is reduced so low that intercellular communication is lost, since acetylcholine is the essential neurotransmitter between cells. Therefore, up to 40-50 μ g Acetylcholine is the the only item that cannot be brought back to normal levels, despite significant increases. This is a major limitation. Since the cancer cell telomere becomes close to zero (one yg or less), cancer cells can no longer divide, and, therefore, this is the simplest approach to controlling cancer growth. An additional advantage of DHEA is that after following up with more than 50 subjects, however, the author found that, as long as everything is kept at the same conditions, the effect of one dose of DHEA often lasts for more than several month. In between, if the patient takes additional medication without finding drug interaction among more than 2 drugs, and the effects of DHEA decreases, then amount of normal cell telomere will not increase by itself. Thus, ideally, a physician should check the telomere level at least once or twice weekly so that it would be possible to maintain cancer cell telomere levels at practically zero, while increasing normal cell telomere to ideal level of 505-530 ng and maintain it.

The phenomena of normal cell telomere increasing effect while cancer cell telomere level reaching nearly zero by Acupuncture was first discovered by the author by press-needle stimulation of true ST. 36 in the mid 1990's

When any drugs such as broad anti-bacterial agent Amoxicillin, or mixture of EPA & DHA as antiviral agent, or Folic Acid or specially prepared Cilantro tablet are to be given to patients, if optimal dose is given to individual patient, normal cell telomere always goes up to over 500ng even when it is less than 1 yg. The author's definition of optimal dose is determined before administration by let the patient holding the drug. The optimal amount of the drug is defined as the amount of drug that increase normal cell telomere to its maximum extent. The optimal dose can change depending on the patients' conditions. The next important point is to give optimal dose with optimal intervals.

Treatment of Atopic Dermatitis Applying Bi-Digital O-Ring Test

Osamu Katayama D.D.S., Ph.D.

Katayama Dental Clinic

(Correspondence: FAX:0254-22-1182, e-mail: osamubobkatayama@aw.wakwak.com)

Purpose:

Occlusal treatment was performed by using the Bi-Digital O-Ring Test (BDORT) (Omura, Y. 1997-2007) in a 28-year-old female patient with severe atopic dermatitis, and the effects were evaluated considering autonomic immunotherapy (Professor Abo, Niigata University).

Methods:

First blood test (February 2005): neutron (78%), lympho (10.2%), eosino (7.1%).
Intra-oral findings: left deviation of the meridian (1 mm), facets in the bilateral maxillary canines, and metal fillings.

Intracorporeal mercury level: 60 mg Acetylcholine 2,000 µg

Body balance and metal allergy were examined using BDORT. Since sleep disorders due to severe itching, and imbalance of the temporomandibular – sacroiliac joints due to bruxism were noted, splints were inserted to improve balance, confirming the balance using BDORT. To treat metal allergy, intra-oral metal fillings were removed, and detoxification was performed using Cilantro. Furthermore, the sacral bone was negative for BDORT, suggesting mineral deficiency. Since mineral deficiency leads to hypertension of the sympathetic nervous system, causing hypothermia and decreasing immunocompetence, we recommended the patient to ingest salt (Sosei sea salt[®]).

Results:

Blood test (August 16, 2005): neutron (83.9%), lympho (7.5%), eosino (4.6%).

Blood test (September 13, 2005): neutron (82%), lympho (9.8%), eosino (3.3%)

Intracorporeal mercury level: below 1 mg

Acetylcholine: 6,000 µg

Since long-term steroid use was stopped simultaneously with the initiation of treatment, symptoms were temporarily aggravated. However, symptoms disappeared three months after, and good results were noted in pregnancy and childbirth. Excess bruxism affects the physiological occlusal condition, causing hypertension of the muscles and tissues in the head and neck region. In particular, since compression of the vertebral artery decreases blood flow in the carnial basal area, stress is constantly applied to the thalamus, influencing the autonomic nervous, endocrine, and immunological systems. Splint therapy using BDORT recovered the physiological jaw position, improved body balance, and stabilized physiological function in this study. However, even though the jaw position is stable, when the ingestion of

minerals is insufficient, the parasympathetically-innervated sacral bone, thalamus, and stellate ganglion are negative for BDORT, showing no improvement in the autonomic nervous system; therefore, the ingestion of minerals was considered essential.

Discussion

There have been many reports on the benefits of the application of BDORT in occlusal treatment since its presentation by Dr. Akira Fukuoka in 1992. The number of patients complaining of equivocal symptoms, such as headache, stiff neck, lumbago, insomnia, autonomic imbalance, atopy, and menstrual pain, is increasing, and occlusal disorders such as bruxism are also considered causative. We revealed that occlusal treatment using BDORT improved body balance, physiological function, and health.

References

1. Yoshiaki Omura: Practice of Bi-Digital O-Ring Test; IDO-NO NIPPON SHA, INC., Tokyo, 1986.
2. Japan Bi-Digital O-Ring Test Medical Society: Bi-Digital O-Ring Test Seminar Text, 2003. Abstract of the 7th Biennial International Symposium on Bi-Digital O-Ring Test, 2006.
3. Akira Fukuoka: Dental Application of Bi-Digital O-Ring Test (Easy understanding method of patient physiological condition) (1)(2); The Nippon Dental Review, No 531:195-204, No.532:195-206, 1987.
4. Toru Abo: Law of the autonomic nervous and immunological systems; Sanwa Co., Ltd.
5. Peter E. Dawson: Evaluation, Diagnosis and Treatment of Occlusal Problems, 2nd edition (Japanese title: Clinical occlusion); Ishiyaku Publishers, Inc.
6. Tsuyoshi Kodama: Activation of endogenous melatonin using bite raising splints; SHIGAKU (ODONTOLOGY), Volume 88, No.1 : p 20, June 1, 2000.
7. Teruo Higa et al.: Wonder of EM Sosei sea salt; SOGO UNICOM Co., Ltd.
8. Yuumi Ishihara: Sufficient salt cure diseases; Keizaikai Co., Ltd.

Contamination of Dentures and Other Oral Appliances

Fujimaki Goro, D.D.S., Ph.D., Cert. ORT-DDS (3 Dan), Fujimaki Kotaro, D.D.S., Ph.D.,
Pastoral Dental Office, Tokyo, Japan

[Introduction] In today's society, air pollution resulting from such factors as building demolition, exhaust gas and cigarette smoke is becoming critical, and the asbestos and heavy metals inhaled into the body is considered to be a problem.

[Purpose] This study was conducted for the purpose of investigating contamination by heavy metals and asbestos in dentures, jaw position adjustment appliances (to be referred to as appliances) and other removable oral appliances, and examine ways to clean and wash those appliances.

[Methods] Contamination of dentures and appliances was investigated for the three parameters indicated below according to the Bi-Digital O-Ring Test (Omura, Y., 1977-2007, abbreviated as "BDORT") using reference concentration samples (RCS), produced by the ORT Life Science Research Institute, of Mercury (Hg), Aluminum (Al) and Asbestos.

1. At the time of prosthetic completion (before installation)
2. At the time of examination several months to several years after installation
 - (1) Routinely worn dentures (cleaning conditions were declared by the wearer)
 - i) Dentures cleaned by the wearer
 - a) using a denture cleanser
 - b) using only a brush under running water
 - ii) Dentures thought to be hardly cleaned at all
 - (2) Removable jaw position adjustment appliances worn only while sleeping and removed during the day and kept in a dry state
 - i) Appliances cleaned by the wearer
 - a) using a denture cleanser
 - b) using only a brush under running water
 - ii) Appliances thought to be hardly cleaned at all
3. Cleaning at a clinic followed by
 - (1) using an active oxygen cleanser
 - (2) using a plaque removing enzyme agent

[Results]	Hg	Al	Asbestos
1 Dentures and appliances at completion	1 ag	1 ag	<0.025 mg
2 (1) Dentures (ia) Cleanser	1 pg - 100 ng	1 pg - 100 ng	<0.025 mg
2 (1) Dentures (ib) Brush	100 ng - 4 µg	100 ng - 4 µg	<0.025 - 0.05 mg
2 (1) Dentures (ii) No cleaning	200 µg	200 µg	0.2 to 0.3 mg
2 (2) Appliances (ia) Cleanser	100 pg - 100 ng	100 pg - 100 ng	<0.025 mg
2 (2) Appliances (ib) Brush	100 ng - 5 µg	100 ng - 5 µg	0.05 - 0.2 mg
2 (2) Appliances (ii) No cleaning	20 - 100 µg	20 - 100 µg	0.4 - 1 mg
3 (1) After using active oxygen cleanser	Decreased to 1/200 - 1/10000		1/2 - <0.025 mg
3 (2) After using plaque removing enzyme agent	Decreased to 2/3 - 1/10000		2/3 - <0.025 mg

(In the case of testing after cleaning at a clinic, there were considerable differences in the rates of decrease due to differences in the amount of time immersed in cleaning solution (10 minutes to 1 hour), whether or not an ultrasonic cleaner was used, whether or not the dentures or appliances were rinsed after cleaning, and whether or not a brush was used.)

[Discussion] Effects for expelling heavy metals and asbestos that have been absorbed into the body have been demonstrated with the selective drug uptake enhancement method (allowing an effective drug to reach the affected area in the body) by ingesting coriander according to the studies and guidance of Dr. Yoshiaki Omura of the BDORT Association.

We previously reported that since harmful substances including heavy metals are expelled from the body by long-term brushing in the form of gingival massage or mastication in persons having a physiologically normal bite as determined by BDORT, it is important to

urinate after eating and brushing¹⁾⁻²⁾.

In this study, considerable amounts of harmful substances consisting of Hg, Al and asbestos were measured on removable oral appliances.

Although Hg and Al were unable to be detected in the raw materials of dentures and appliances, the level of contamination by Hg and Al after completion of these as finished products were 1 ag for both dentures and appliances. Although it is virtually certain that the dentures and appliances were contaminated in the production process even through completely different production processes are used, the reason for this cannot be determined.

However, it appears that dentures and appliances rapidly become contaminated after they are installed in the mouth. This contamination ranged from a level of 1 pg in the case of routinely worn dentures cleaned with a cleanser to a level of 100 µg in the case of appliances only worn while sleeping and kept dry during the day but which were hardly cleaned at all, and extended to an alarming level of 200 µg in the case of dentures worn by smokers.

On the basis of these findings as well, harmful substances are presumed to become adhered to and deposited on removable appliances when passing through the oral cavity either directly when smoking or through breathing and food. It can be said that this prevents these harmful substances from being adsorbed into the body by becoming adhered to appliances.

Although humans basically excrete harmful substances that have been taken into the body in the urine, it is also likely that harmful substances become adhered to and deposited on oral appliances through saliva that flows into the oral cavity. As a result of fresh saliva then coming in contact with the contaminated appliance, the harmful substances are eluted, reabsorbed and circulate throughout the body. In the case of dentures, there is the possibility of similar events occurring as a result of contact by food and moisture when eating. In order to prevent the elution and reabsorption of harmful substances that are adhered to and deposited on dentures, it is necessary to carefully clean them whenever these harmful substances are adhered. The results of this study have shown that cleaning by brushing is not sufficient since considerable levels of contaminants were detected. In consideration of this as well, cleaning of dentures and appliances requires not only brushing, but the use of a more effective method as well.

Therefore, dentures and appliances were found to be able to be cleaned to a level of about 1/10000 by immersing in a cleaning solution for about 1 hour followed by using a brush under running water and finally cleaning with a cleanser to effectively remove harmful substances. This suggested that if adsorbed substances are removed by repeatedly cleaning on a daily basis, not only does this serve to restore the inherent functions of dentures and oral appliances, but also serves as a means for enabling harmful substances to be adsorbed and expelled.

[Conclusion] Dentures, jaw position adjustment appliances and other removable oral appliances are constantly being contaminated by harmful substances such as heavy metals and asbestos. Although there are differences in the degree of contamination depending on the particular conditions, since these removable oral appliances are unable to be completely cleaned by brushing alone, it is necessary to use a cleanser and so forth to keep them clean at all times.

[References]1) Fujimaki G.: The Effect of Oral Daily Life Activity on the Body - Part II: The Effect of Oral Physiotherapy by Tooth Brush on the Body, Acupuncture & Electro-Therapeutic. Res., The Int. J., Vol. 27, pp. 281-282, 2002.

2) Fujimaki G.: Adjusting to the Physiologically Normal Bite Relation Using the Bi-Digital O-Ring Test and its Effect on the Rest of the Body, Acupuncture & Electro-Therapeutic. Res., The Int. J., Vol. 28, pp. 84-86, 2003.

[Correspondence] Pastoral Dental Office, 1-19-4 2F, Kanda-Awajicho, Chiyoda-ku, Tokyo 101-0063, Japan FAX:+81-3-3251-6570 <http://www.pastoral-shika.com> E-mail:kow@pastoral-shika.com

Effects of Brushing on the Autonomic Nervous System

Fujimaki Kotaro, D.D.S., Ph.D., Fujimaki Goro, D.D.S., Ph.D., Cert. ORT-DDS (3 Dan)
Pastoral Dental Office, Tokyo, Japan

[Introduction] Brushing within the oral cavity is typically performed for the purpose of removing food residue and plaque adhered to the surfaces of teeth. However, it appears that there has been little attention directed at another form of brushing known as oral physiotherapy.

[Purpose] This study was conducted by distinguishing between brushing consisting of brushing only the surfaces of the teeth (to be referred to as "ordinary brushing") and brushing of long-term gingival massage stimulation (to be referred to as "massage brushing"), which is a form of oral physiotherapy primarily involving stimulation of the gingiva and alveola by massaging, and investigating any differences in their effects on the autonomic nervous system.

[Methods] 1. The head, organs, sites where symptoms were manifested and sites of non-specific complaints of the subjects were measured for reference concentration samples (RCS) of noradrenalin (also known as norepinephrine, NE) and acetylcholine (Ach) produced at the ORT Life Science Research Institute using the Bi-Digital O-Ring Test (Omura, Y., 1977-2007; abbreviated as "BDORT").

2. Ordinary brushing was performed for about 3 minutes followed by measurement of the same parameters.

3. Massage brushing was performed for about 15 minutes followed by measurement of the same parameters.

[Results] NE levels were confirmed to increase 2 to 5 times and Ach levels were confirmed to decrease by 1/2 to 1/5 at all measurement sites in all subjects following ordinary brushing for about 3 minutes.

On the other hand, NE levels were confirmed to decrease by 1/2 to 1/10 and Ach levels were confirmed to increase 2 to 10 times at all measurement sites in all subjects following massage brushing for about 15 minutes.

[Discussion] For treatment of disease and for a stable recovery of physical and mental health, it is necessary that the parasympathetic nervous system, which acts to conserve, restore and maintain vital energy when at rest, be dominant rather than the sympathetic nervous system, which functions in response to fight or flee.

We previously reported that oral daily life activities have considerable effects on the mind and body, including an effect on the autonomic nervous system¹⁾⁻⁵⁾. We reported that following 15 minutes of oral physiotherapy with a tooth brush by both dentate and edentulous subjects, while the levels of the beneficial substance Ach increased at sites where symptoms were manifested, the levels of harmful substances (such as heavy metals, viruses, thromboxane B2 and integrin $\alpha 5\beta 1$) decreased to about 1/10 their original levels, and that balance was confirmed in the urine following urination, thereby demonstrating that it is desirable to urinate following proper brushing⁵⁾. However, since NE was not contained in the target substance used in the study at that time, we were unable to verify the presence of effects on the autonomic nervous system. Therefore, in this study, an investigation was made as to the manner in which the autonomic nervous system is actually affected according to differences in brushing methods using the two substances of NE,

which is a sympathomimetic substance of the autonomic nervous system, and Ach, which is a parasympathomimetic substance of the autonomic nervous system, namely, according to differences in the sites contacted by the bristles during brushing with the bristles of the toothbrush which is considered to be the most effective brushing method.

In general, people typically apply toothpaste and only brush the surfaces of the teeth, and then complete brushing after whitening the teeth, removing food residue and controlling plaque. This is referred to as "ordinary brushing" in this study, and since a state was reached in which the sympathetic nervous system was dominant in the form of increased NE levels and decreased Ach levels, physical and mental condition worsened. On the basis of these findings, the daily practice of brushing the teeth by ordinary brushing alone was suggested to cause the sympathetic nervous system to become dominant, thereby promoting the occurrence of various lifestyle diseases.

However, since massage brushing decreased NE levels and increased Ach levels, a state was reached in which the parasympathetic nervous system was dominant. Since this serves to normalize the circulatory and immune systems, activate tissue metabolism and normalize brain physiology, in addition to being effective for the treatment of the lifestyle disease periodontitis, it also leads to improved physical and mental condition that goes beyond the health of the oral cavity³⁾.

On the basis of these findings, even though brushing the teeth may be a common practice, since completely opposite effects are demonstrated depending on the manner in which brushing is performed, this means that brushing plays an extremely important role with respect to physical and mental health.

In Japan, the number of people who experience manic depression or children who tend to anger easily is currently on the rise, and the number of persons suffering from physical and mental disorders or who are likely to in the future is extremely large. Therefore, even during the cavity-prone period from childhood to adolescence, instead of simply brushing the teeth back and forth, practicing long-term massage brushing consisting mainly of stimulating the gingiva by massaging primarily the neck of the teeth is absolutely necessary since it acts to improve both physical and mental health. This applies similarly to the period of increased susceptibility to periodontitis among middle-aged and elderly persons.

[Conclusion] According to the findings of this study, simply brushing the teeth in the manner of ordinary brushing caused the sympathetic nervous system to become dominant. Massage brushing, however, resulted in dominance by the parasympathetic nervous system. On the basis of these results, massage brushing was demonstrated to be suitable for not only the oral cavity, but also for improving and maintaining physical and mental health.

[References]

- 1) Fujimaki G.: Adjusting to the Physiologically Normal Bite Relation Using the Bi-Digital O-Ring Test and its Effect on the Rest of the Body, *Acupuncture & Electro-Therapeutic Res., The Int. J.*, Vol. 28, pp. 84-86, 2003.
- 2) Fujimaki G., Fujimaki K.: The effect of the Rhythmic Activity of Mastication on Brain Substances, *Acupuncture & Electro-Therapeutic Res., The Int. J.*, Vol. 30, pp. 313-314, 2005.
- 3) Fujimaki G., Fujimaki K.: Dental Care for Stress Relief, 7th International Symposium on the Bi-Digital O-Ring Test, Program & Abstracts, pp. 151-153, 2006.
- 4) Fujimaki G., Fujimaki K.: Autonomic Nervous System and Occlusion, *Occlusion and Health*, Vol. 13, 2007 (in print).
- 5) Fujimaki G.: The Effect of Oral Daily Life Activity on the Body - Part II: The Effect of Oral Physiotherapy by Tooth Brush on the Body, *Acupuncture & Electro-Therapeutic Res., The Int. J.*, Vol. 27, pp. 281-282, 2002.

[Correspondence]

Pastoral Dental Office : 1-19-4 2F, Kanda-Awajicho, Chiyoda-ku, Tokyo 101-0063, Japan
FAX:+81-3-3251-6570 <http://www.pastoral-shika.com> E-mail:kow@pastoral-shika.com

**Disclosure of Causes of Human-specific Intractable Immune Diseases by
Means of Neuromuscular Resonance
- Detection of Mitochondrial Deterioration Due to Intracellular Infections
Using Bi-Digital O-Ring Test -**

Katsunari Nishihara, DMSC. , DMD.

Former Assist. Prof., Dept. of Oral Surgery, Faculty of Medicine, University of Tokyo
President, NISHIHARA Institute HARA Bldg. 3F, 6-2-5 Roppongi, Minato-ku, Tokyo
(Correspondence: FAX: 03-3479-1473, E-mail: nishihara-ken@a.email.ne.jp)

1) The New Life Science

Human-specific intractable immune diseases are now commonplace as they essentially exhibit a close correlation with today's modern lifestyles. However, to disclose what human-specific intractable immune diseases are, it is necessary not only to strictly define life, but also to read the three riddles of the vertebrates to disclose the mechanisms of the mammalian life system.

In the 20th century, life was not strictly defined. Schrödinger proposed to establish biology at the molecular level. However, he did not define life, but noticed inheritance to be a key characteristic. He, therefore, proposed to solve the phenomena of inheritance by using the simplest prokaryote bacteria and their parasites, viruses of bacteriophage (Schrödinger, 1960).

Vertebrates have three kinds of riddles. The first is multicellular interaction or multiple organ correlation in systemic behavior as a synthetic creature like a single-cell protozoa; this is known as Cuvier's principle (Cuvier, 1812). The second is the mechanism of evolution under Lamarck's Theory (Lamarck, 1809), which included Haeckel's biogenetic law of correlation of ontogeny and phylogeny (Haeckel, 1896). The third is riddles of mechanisms in the immune system (Metinicoff and Ehrlich, 1909), including the development of bone marrow hemopoiesis (Nishihara, 1994).

Now, in the 21st century, life still remains to be scientifically defined. The author defines life as follows: life is a hydrocolloid matter of organic substances with various kinds of minerals encapsulated by phospholipid membranes in which a part or the whole structure remodels itself by means of energy metabolism. Consequently, this organic system can overcome aging by remodeling, namely the renewal of tissues or cells. Therefore, remodeling concomitant with energy metabolism is essential for life (Nishihara, 2004). Life of higher animals, like vertebrates, is the circulating system of energy metabolism under sunlight energy, as well as earth and moon gravity energy streams, just like a waterwheel or windmill, which enable energy metabolism conjugated with remodeling in the animal body by the energy of metabolized nutrients absorbed from digested food. By this remodeling, animal cells can overcome aging, i.e., decreased entropy (Nishihara, 2006). This circulating system of energy metabolism necessitates both energy from the cosmos (sunlight and gravity) and energy from food (nutrition). The life of higher animals has both acceptors of energy and acceptors of substance with mass, i.e., nutrients and oxygen. The former are sensory organs and the latter are visceral organs.

2) Establishment of the Simple Theory of Vertebral Life

The simple theory of multicellular organisms is based on the following facts:

1. All cells in creatures have the same genetic codes with the same basic cellular construction and carry out life activities by means of nuclear functions concomitant with mitochondrial energy metabolism.
2. Mitochondria in each specific differentiated cell carry out not only all specific cellular functions, but also intracellular communication by means of their cytokines.
3. All stimuli affecting the creature, e.g., physico-chemical, nutrition, toxins, bacteria, parasites, and psychological stresses, are transmitted through the optic thalamus into the

hypothalamus by means of the neuro-muscular as well as the cardio-vascular system. These stimuli are transmitted to the front lobe of the hypophysis, and are then converted into hormones, which are the direct control system of 60 trillion cells. This is the hypophysis-suprarenal hormone system. 4. Adreno-cortico tropic hormones control the secretion of minerals and glycol-corticosteroid hormones; therefore, all cells in creatures having 800~3000 mitochondria, are directly controlled hormonally. 5. Bacteria, mycoplasma and viruses are easily parasitic in various organ cells, intracellularly in some conditions, and such infected bacteria or viruses bring about functional disturbances of mitochondria and the nuclei.

3) Simple Theory of Vertebral Life

Based on Mayer's energy construction theory, substance with mass is equivalent to energy, which is substance without mass, the life system of multicellular organisms, i.e., the vertebrates, are regulated by the following:

1. The central nervous system, conjugated with the somato-muscular and viscero-muscular system, is the controlling system of the membranous electric ion channel. 2. The topological streaming potential system works for biomechanical morphological change, except growth and development, against gravity energy in blood and lymph vessels as well as in muscles and skeletal bones of the hydrodynamic system. 3. Substances with mass, such as oxygen, nutrients, minerals, cytokines, and hormones, which are absorbed from the gut system into the bloodstream, control tremendous numbers of mitochondria directly in 60 trillion cells via the cardiovascular system. 4. Both substances with mass as well as energy without mass trigger gene expressions in nuclei and mitochondria to carry out life activities. 5. Mitochondria in all 60 trillion cells control all cell membranes and hormones and cytokine secretions to maintain interaction among these 60 trillion cells. Comparing the human body to a nation, various organs are states or prefectures, cities or towns, or large communities. Each cell, having eight hundred to three thousand mitochondria, is like a union, community, factory, or large, well-run department store. Then what are these numberless mitochondria? Mitochondria are just like citizens in a nation-state. Only citizens can support the nation. Likewise, only vivid mitochondria can sustain the human body. Without mitochondrial functions, humans could never maintain their health.

Based not only on the above-mentioned mechanisms, but also on this mitochondrial cytokine system, evolutionary change according to environmental variations, development of the immune system, and the mechanism of Cuvier's principle, namely, the systematic movement of multicellular animals as if monocellular protozoa, are carried out. This is the simple theory of the vertebral-life system.

4) Principle of resonance phenomena of the neuro-muscular system via the Bi-Digital O-ring Test is as follows:

1. Animal cells made of hydrolytic colloids exhibit the characteristics of movement. In animals, neurons develop concomitant with muscle cells. In creatures without muscle there are no neurons, and without neurons, no muscle. The brain and spine are conjugated with muscles. 2. In living cells, mitochondria evoke the current functioning of the electron transmitting system of oxidative phosphorylation. 3. All substances have electron spin and this spin and mitochondrial current in cerebral neurons exhibit resonance phenomena. 4. In intracellularly infected cells, the mitochondrial functions of their electron transmitting system are disturbed. 5. All cells composing somato-visceral organs, except blood cells, have connections with cerebral neurons by means of not only the neuro-muscular but also the capillary and autonomous nervous system, and the resonance of mitochondria in neurons is reflected by the strength of somato muscle contractions.